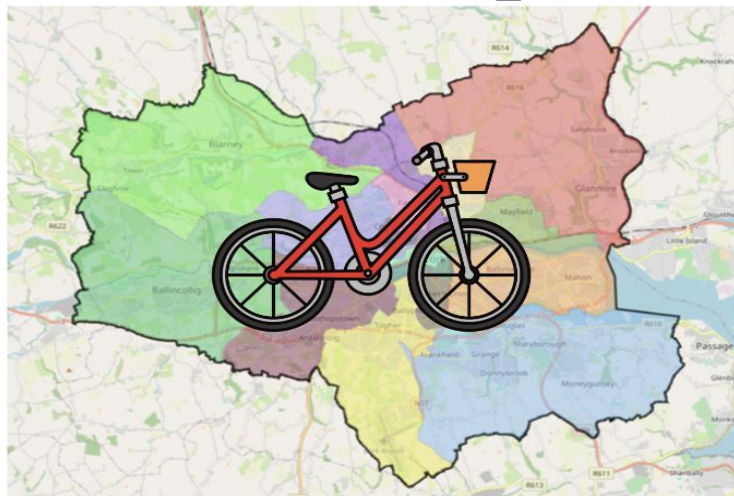


Socio-Cycle

Exploring the socio-cultural significance of cycling in an Irish regional city



Dr Eileen Hogan, School of Applied Social Studies,
University College Cork

e.hogan@ucc.ie

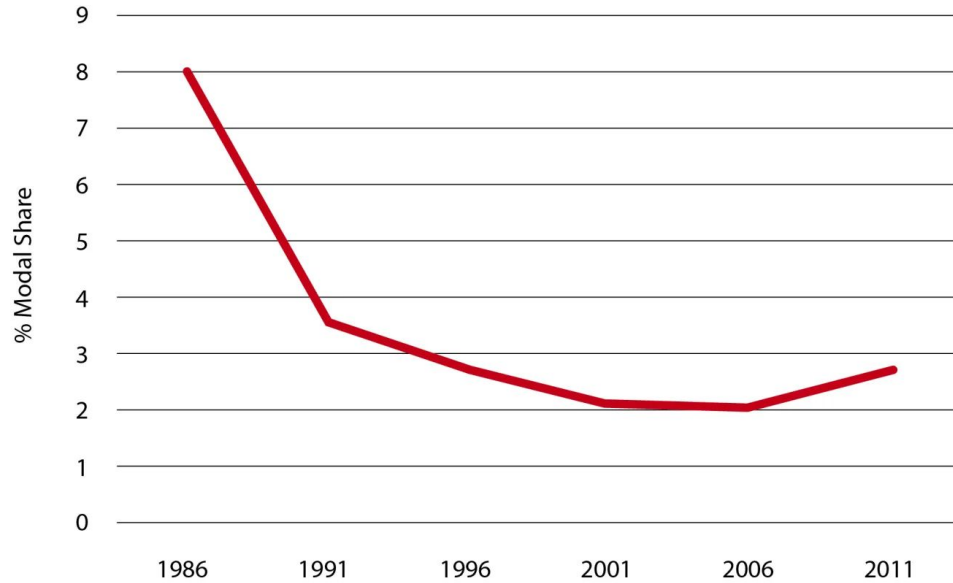
Why am I here? My bicycling “start-stop-starts”



A limited number of studies have explicitly examined how women use bicycles at different life stages, suggesting that social as well as physical environments are important... These studies suggest that bicycling may ‘start-stop-start’ for people throughout the life course in a cyclical rather than linear fashion. (Sersli et al, 2020: p2)

Cycling modal share in Cork

1986 - 2011

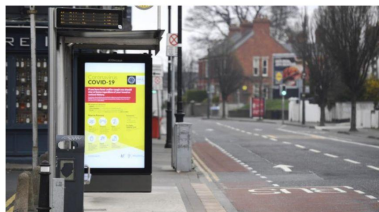


Source: <https://irishcycle.com/2015/06/26/how-cycling-declined-in-irish-cities-before-bouncing-back-in-some/>

Home / Short News / Irish transport system must become less car-dependent, OECD

Irish transport system must become less car-dependent, OECD

By Molly Killeen | EURACTIV.com 6:50



The report, published on Wednesday, finds that Ireland's existing transport habits stand in the way of the country achieving its goal of reducing greenhouse gas emissions by 51% of 2018 levels by 2030, for which a 50% reduction from the transport sector will be necessary. [EPA-EFE/AIDAN CRAWLEY]

OECD: Ireland must reallocate road space, promote buses, rental bikes and e-bikes

Updated / Wednesday, 5 Oct 2022 12:33



Today's report says Ireland needs to change engrained mindsets around car use (Pic: RollingNews.ie)



Image: Shutterstock

Ireland's 'car-dependent' transport system needs to change, says OECD

Recommendations to fuel efficiency and electric vehicles are part of

Mobility hubs and change to Ireland's 'car-centric mindsets' needed, says OECD

The OECD report, Redesigning Ireland's Transport for Net Zero, has recommended a drastic change to Ireland's transport system.



Its recommendations include road space reallocation (PA)

By Gráinne Ní Aodha, PA
October 05 2022 11:00 AM

Volume 1 Written Statement



CMATS Modal Share Baseline and Outcomes

Mode	Walking	Cycling	Public Transport	Car
Existing	21%	1%	10%	66%
Outcomes	21%	10%	25.7%	49.3%

Table 4.1: CMATS Modal Share Baseline and Targets. Source: CMATS.

*CMATS = Cork Metropolitan Area Transport Strategy 2040



Continuing California Dream
Early 1994 (1994)



Cork Cycle Network Plan

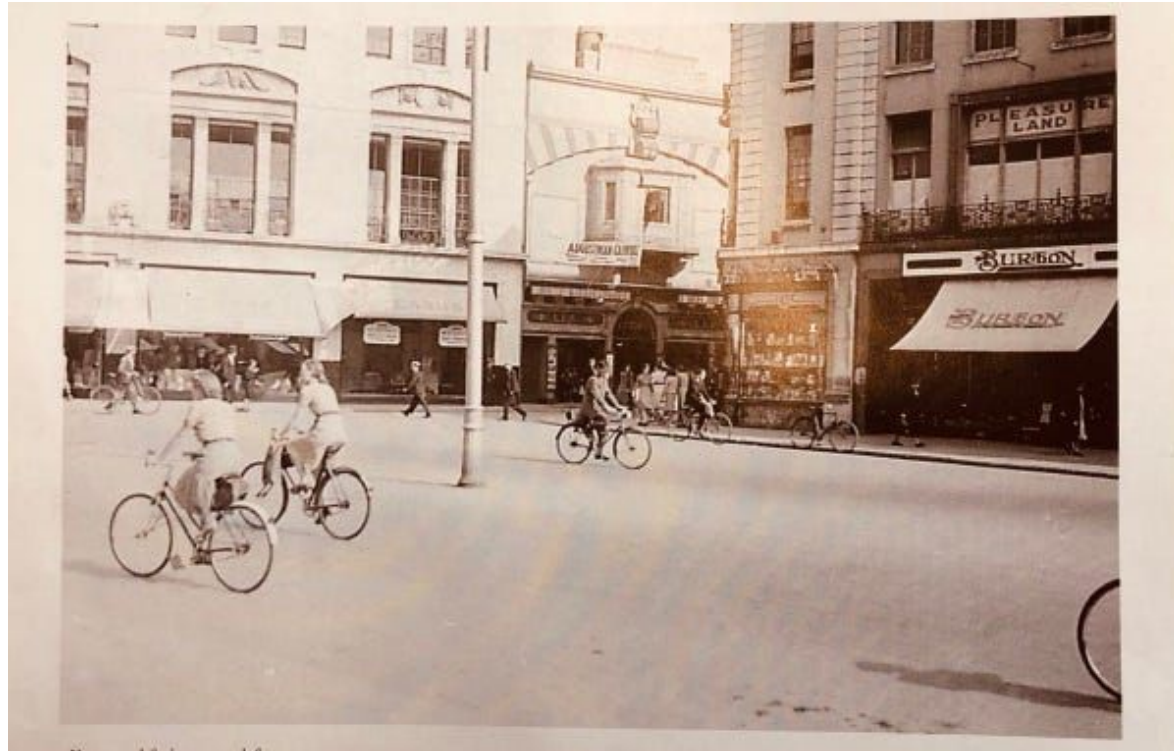




- **What about the intangible and ephemeral, the sensory, emotional, kinaesthetic and symbolic aspects of cycling?**... [C]onsideration of affective factors needs to be more prominent in cycling research if more realistic understandings of people's mobility and their travel choices are to be unearthed" (Brown and Spinney, 2010: 132).
- value of Social Practice Theory, which 'situates mobility practices within social relations of everyday life' (Sersli et al, 2020: p2)



How do we get back to the future?



See:

<http://www.cyclingcities.info/your-city-next/cycling-cities-cork-experience/>

XXX

No perfect cycling infrastructure



Spraying on the street - Not really October 2011



References

Brown, K., & Spinney, J. (2010). Catching a glimpse: the value of video in evoking, understanding and representing the practice of cycling. In *Mobile methodologies* (pp. 130-151). London: Palgrave Macmillan

Sersli, S., Gislason, M., Scott, N., & Winters, M. (2020). Riding alone and together: Is mobility of care at odds with mothers' bicycling?. *Journal of transport geography*, 83(C). Pp.1-9